

Nilfisk

C 125.4

C 130.2

C-PG 130.2 X-TRA



Repair Manual

Nilfisk

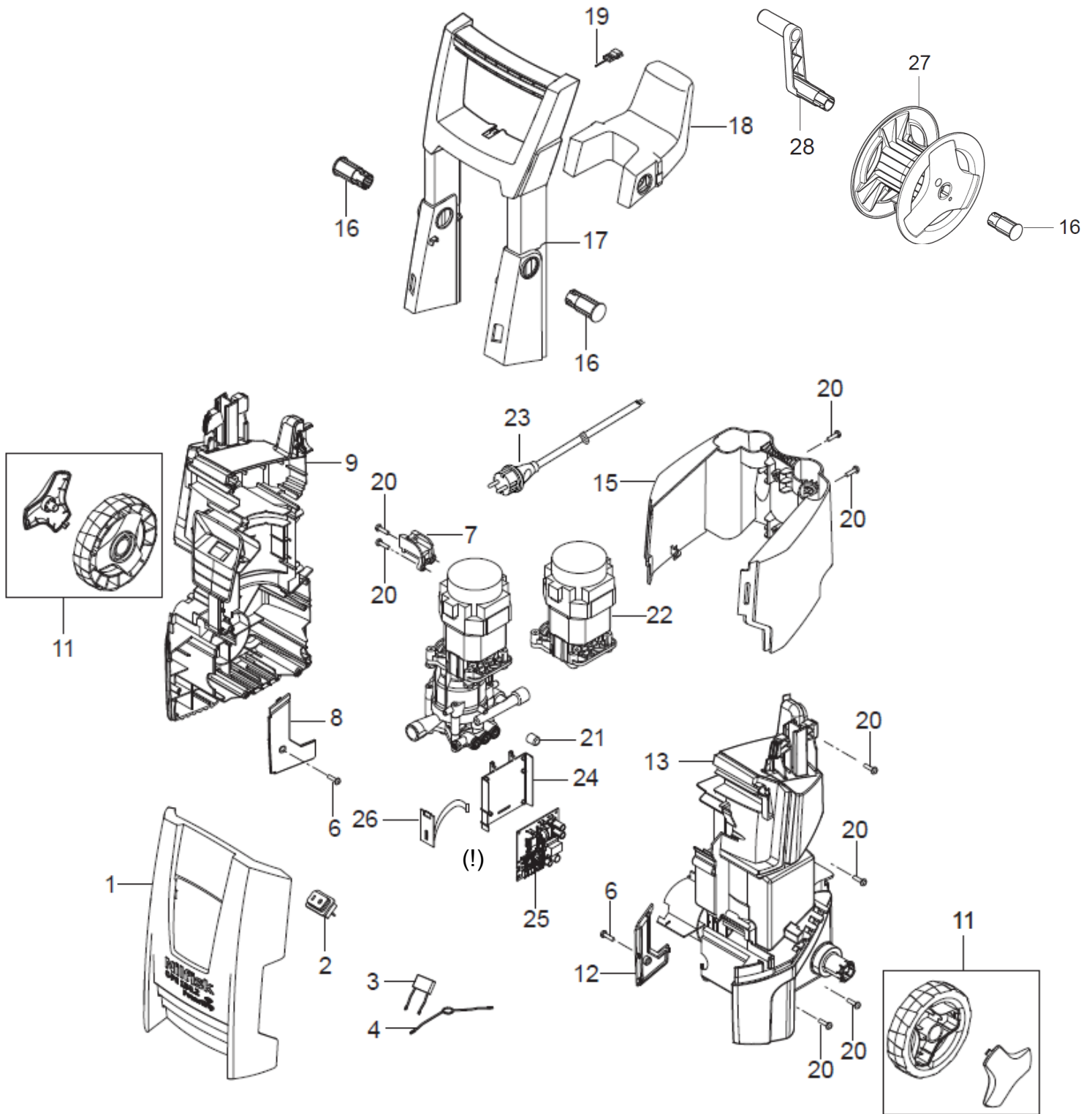
A. Safety precautions	3
B. Technical data	4
C. Construction	5-6
D. Service / Repair	7-11
E. Torque	14-15
F. Operating supplies	16
G. Operation	17-19
H. Diagram	20

WARNING!

- High pressure jets can be dangerous. Never direct the water jet at persons, pets, live electrical equipment or the machine self.
- The operator and anyone in the immediate vicinity of the site of cleaning should take action to protect themselves from being struck by debris dislodged during operation. Wear goggles during operation.
- Never try to clean clothes or footwear on yourself or other persons.
- Do not let children or people who have not read the instruction manual operate the machine.
- Never use the machine in an environment where there could be a danger of explosion. If any doubt arises, please contact the local authorities.
- It is not allowed to clean asbestos- containing surfaces with high pressure.
- This high pressure washer must not be used at temperatures below 0°C.
- Never let any persons stay under the product when stored on the wall.

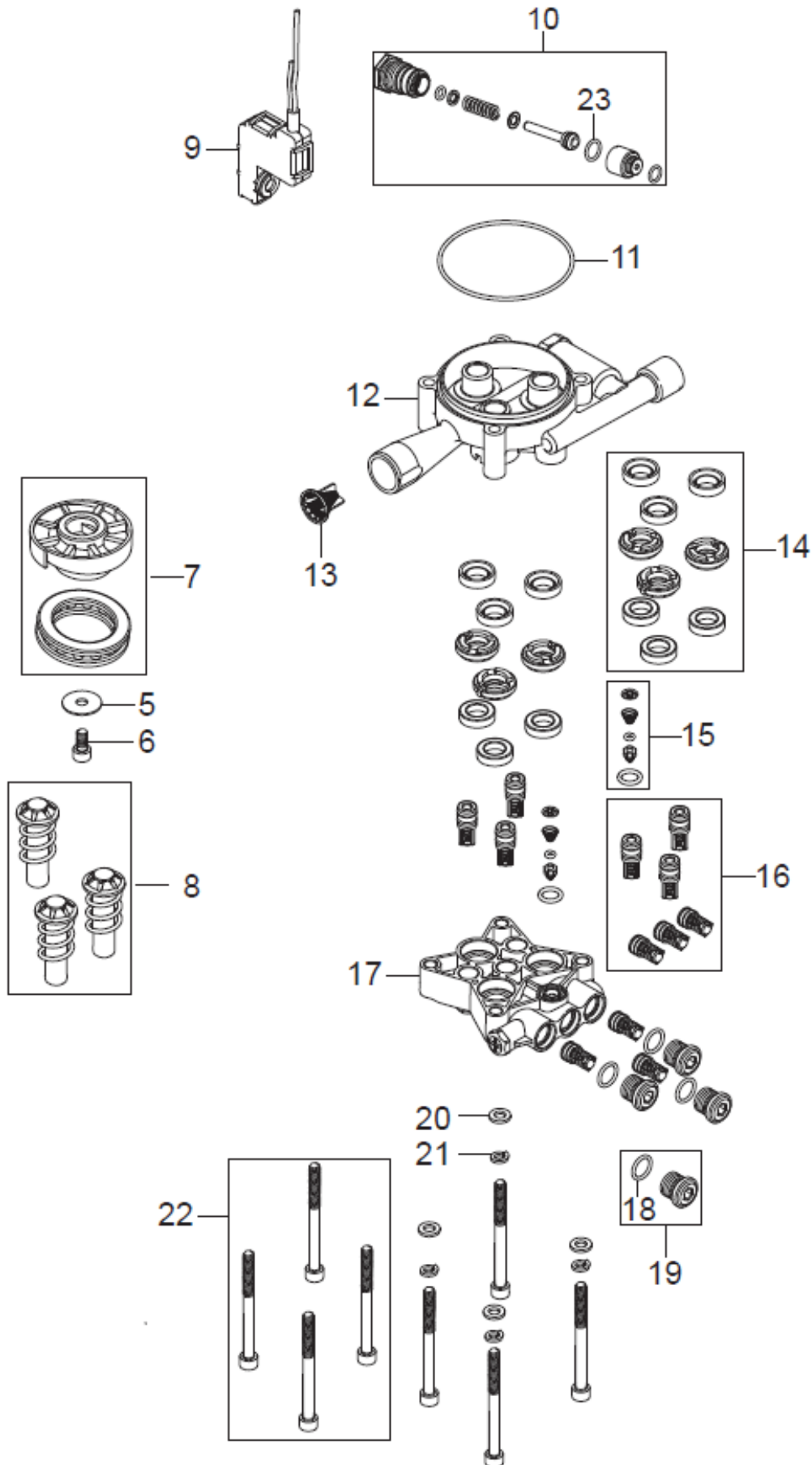
Product segment: Consumer		C125.4	C130.2/C-PG 130.2	
Specification	bar	Max 125	Max 130	
Voltage	V	230	230	
Frequency	Hz	50	50	
Power consumption	A	7,5	7,8	
Power absorbed	KW	1,7	1,8	
Numbers of revolutions	rpm./ min.	17500-18000	17000-18000	
Water volume, HP	l/ min.	5,3-6,3	5,3-6,3	
Pump pressure	bar	85-100	90-105	
Nozzle pressure	bar	79-94	84-99	
Opening pressure	bar	115-140	115-140	
Retaining time	min.	5	5	
Oil contents	ml	80	80	
Oil type		LHM 32	LHM 32	
Max water inlet temperature	C	40	40	
Max water inlet pressure	bar	10	10	
High pressure hose length	m	6m Textile	8m Textile/soft	
Suction height	m	0,5	0,5	
Electric cable	m	5m	5m	
Insulation class		B	B	
Tightness		IPX5	IPX5	

C 125.4 - C 130.2 - C-PG 130.2 X-TRA Construction of cabinet parts.



(!) Part 24, 25, 26 are on only used on PG versions

C 125.4 - C 130.2 - C-PG 130.2 X-TRA Construction of pump unit.



Dismounting / mounting of front cabinet and accessory storage.

1. Tools: Torx 20 screwdriver and flat screw driver
2. Remove the handle by pressing the 2 * 2 snap locks (fig.2). Loosen one side first and then the other side.
3. Remove the 2 torx (TX20) screws from the rear side (fig. 3)
4. Loosen the front cabinet from the accessories storage with a screw driver as shown on fig. 4 from both sides. Take off the accessories storage.—When mounting the accessories storage to the front cabinet, there should be a “click” from the parts before to mount the 2 screws.
5. Now the front cabinet can be lifted upwards to dismount it.

Fig. 1



Fig. 2

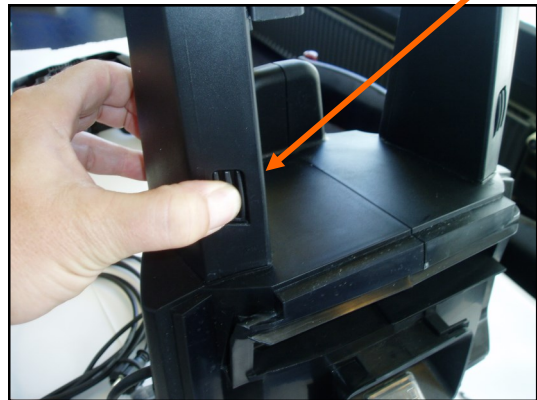


Fig. 3



Fig. 4



Fig. 5



Dismounting / mounting of Control Unit and/or Wireless Unit (Only PG version).

1. Tools: Torx 9 screwdriver
2. Controle Unit: Disconnect cable to Wireless Unit, Remove the 3 torx (T9) screws , exchange Controle Unit, dismount the 3 wires.
Mount and tighten the torx (TX9) screws Torque: max 0,8 Nm, and connect cable to Wireless Unit, check the circuit diagram and mount the 3 wires accordingly on the Control Unit
3. Wireless Unit: Disconnect cable to Wireless Unit, slide the Wireless Unit out, exchange the wireless Unit, slide the Wireless Unit back, and connect cable to Wireless Unit.

Check how to reconfigure the pairing of the machine and the PowerGrip handle at page xx

Fig. 1



Fig. 2

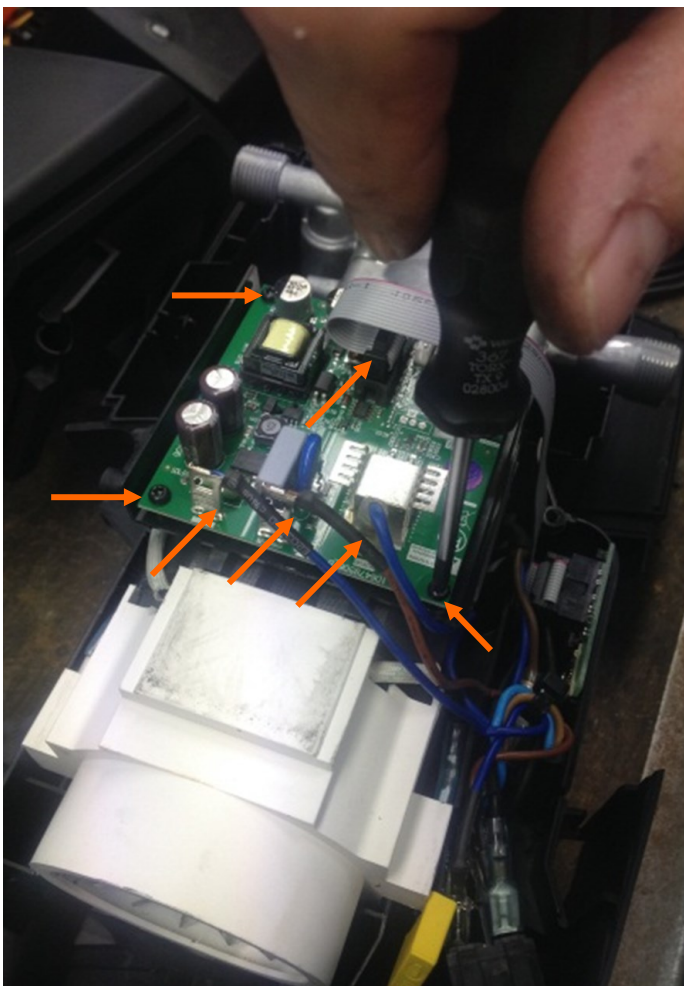
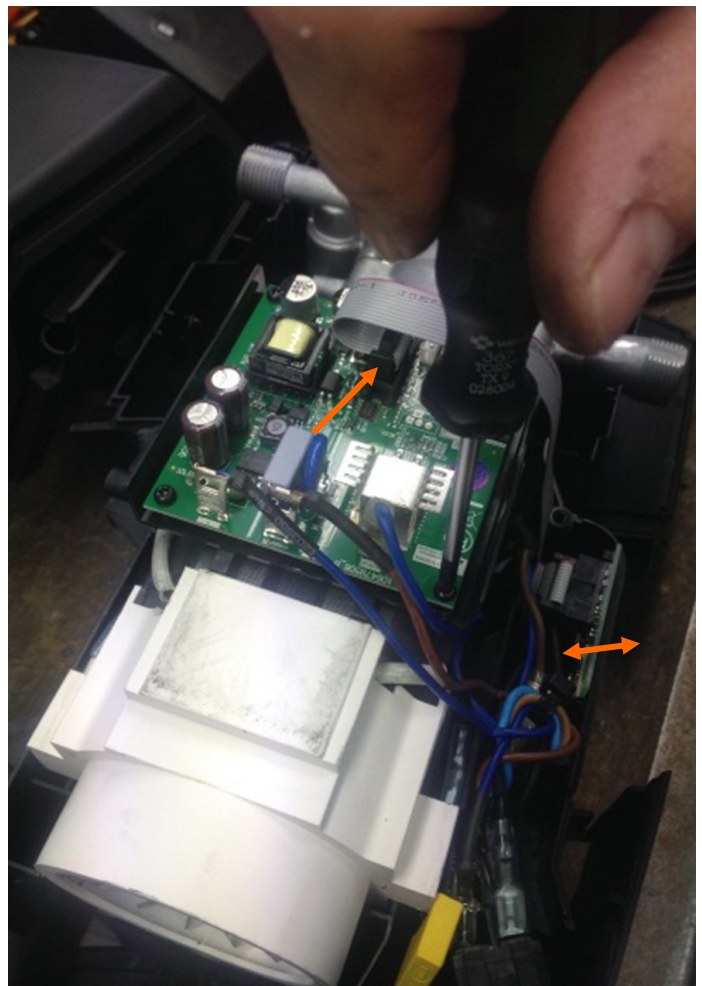


Fig. 3



Pairing of the machine and the PowerGrip handle (Only PG version).

Pairing of the wireless devices is needed if:

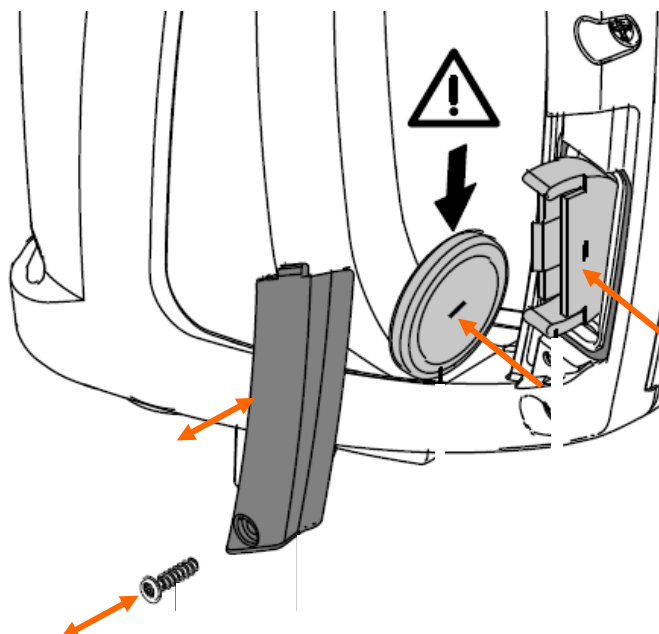
- the PowerGrip has been exchanged
- the Wireless Unit in the PowerGrip has been exchanged
- the Control Unit in the machine has been exchanged
- the Wireless Unit has been exchanged in the machine
- Or if the user hasn't paired the machine and the PowerGrip handle

Pairing of the machine and the PowerGrip handle:

1. Ensure that the machine is not turned on
2. Dismount the battery and mount the battery again
3. Orange indicator on the handle is now blinking in approx. 2 minutes, indicating that the handle is in pairing mode.
4. Turn on the machine within the 2 minutes of pairing mode, when the orange indicator stops blinking, the handle and the machine has been paired and can now be operated.

Exchange battery (cell type: CR 2032) in PowerGrip handle.

1. Dismount the screw (Phillips) and the cover to the battery. Dismount the old battery
2. Ensure that the new battery is mounted with the right polarity in the battery holder
3. Mount the battery cover and mount the screw



Dismount / mounting of motor cover.

1. Place the cleaner on the side and remove the 5 torx 20 screws. Fig 1
2. Remove the wheel to remove the 5th. Screw if the torx screw driver is too short. Fig 2
3. Now the cabinet can be removed and the motor / pump unit can be taken out. Fig 3 & 4

The micro switch box is removed by hand. It can be hard but it is just to be “broken” off!

When mounting the MPU again, first step is to mount the micro switch box. This can be done by hand (*alternatively use a plastic hammer*), but be very careful to mount in the correct position) Then place the MPU inside the cabinet.

Fig. 1

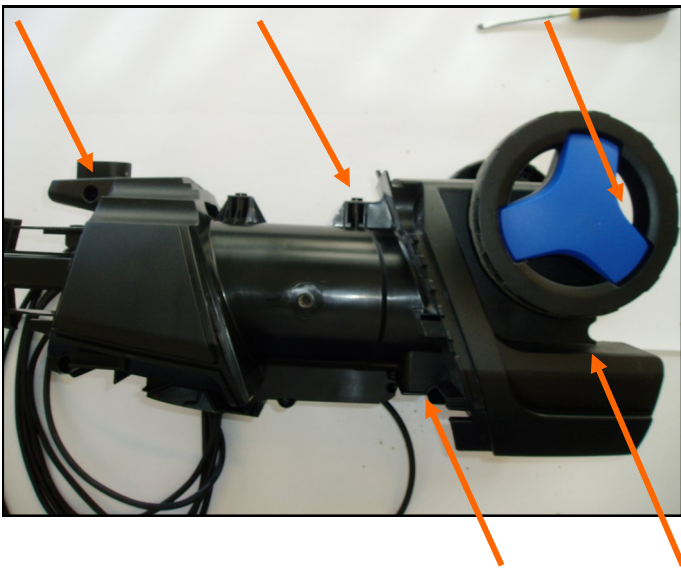


Fig. 2

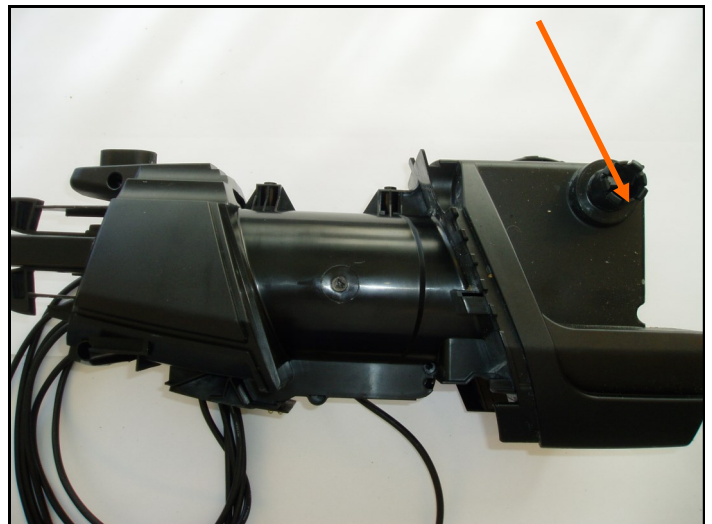


Fig. 3

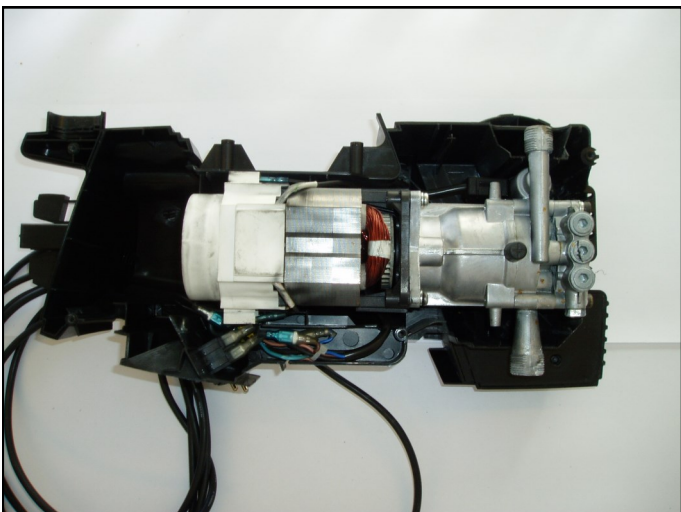
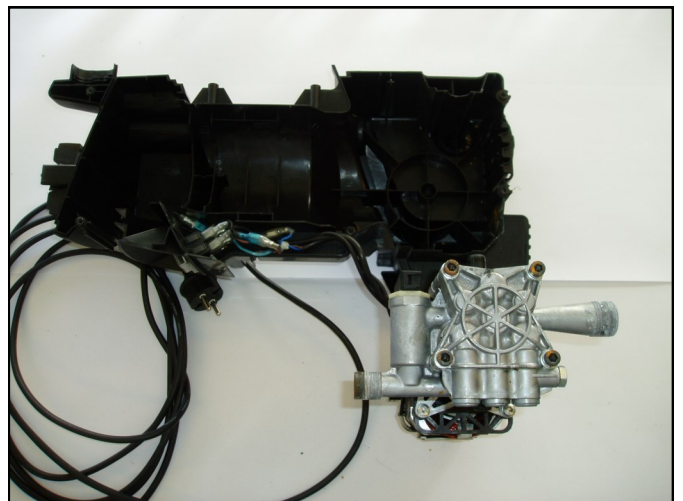


Fig. 4



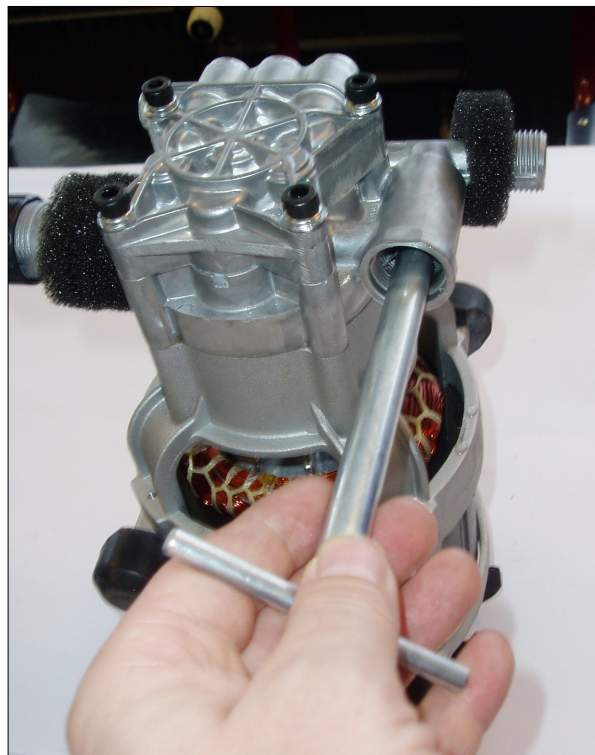
Dismounting / mounting of the start / stop valve.

Fig 1 is showing how the start / stop valve must be assembled.

A special tool is needed in order to take out the seat of the start / stop valve (fig 2)

Please use "Puller for valve seat M4" item number 31000189.

NOTE: the valve seat is no longer usable after using the puller.

Fig. 1**Fig. 2**

Dismounting / mounting of water / oil seal and valves.

To change the oil seals, water seals and pressure valve, use a screw driver to dismount the parts (fig 3 & 4).

Alternatively there is a puller number 1220103 to pull out the valves seats (pressure and suction valves).

Note: the seat is no longer usable after using the puller

Cleanup and lubricate before mounting!

Fig 1 is showing the pump after opening the cylinder head from the cylinder block.

Fig 2 is showing how all the parts must be assembled into the cylinder head.

Fig. 1



Fig. 2

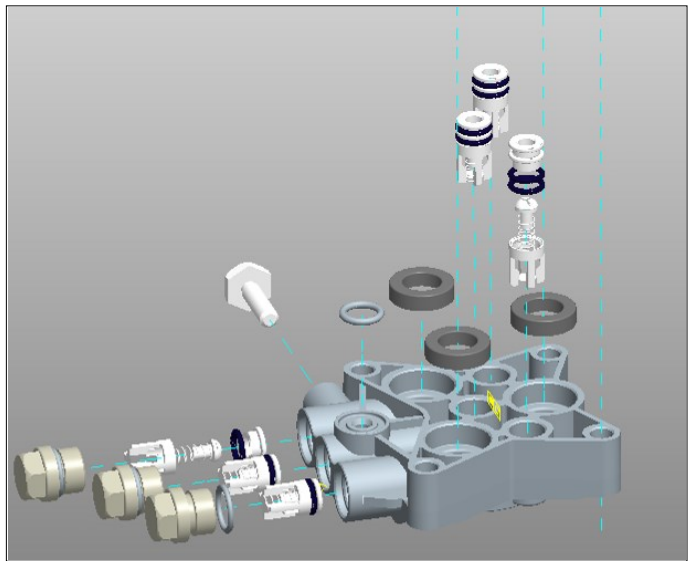


Fig. 3



Fig. 4



IMPORTANT mounting information:

In order to optimize the self suction mode the valve bodies must be positioned correct according to the water canals inside the cylinder head. The “leg” of the valve body must not be placed in front of a canal. Fig 1 is showing the WRONG positioning and fig 2 is showing the CORRECT positioning.

Fig. 1

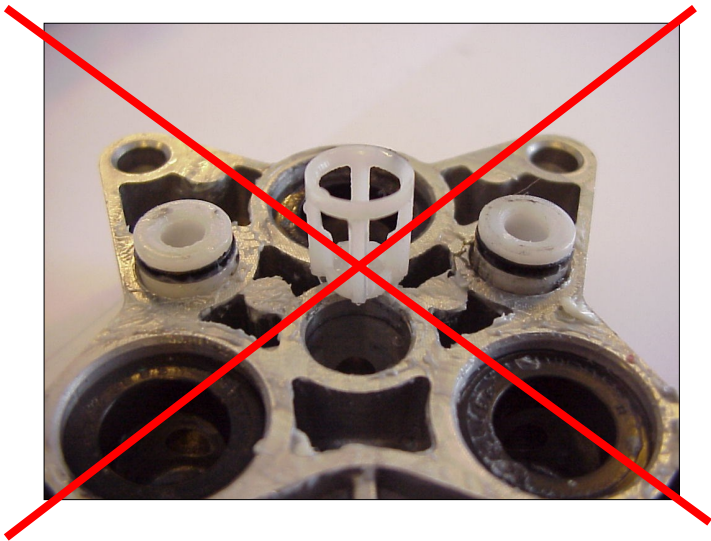
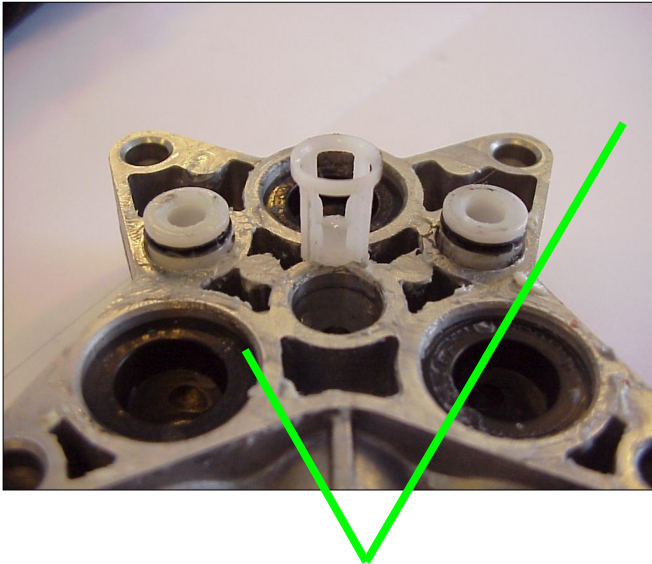
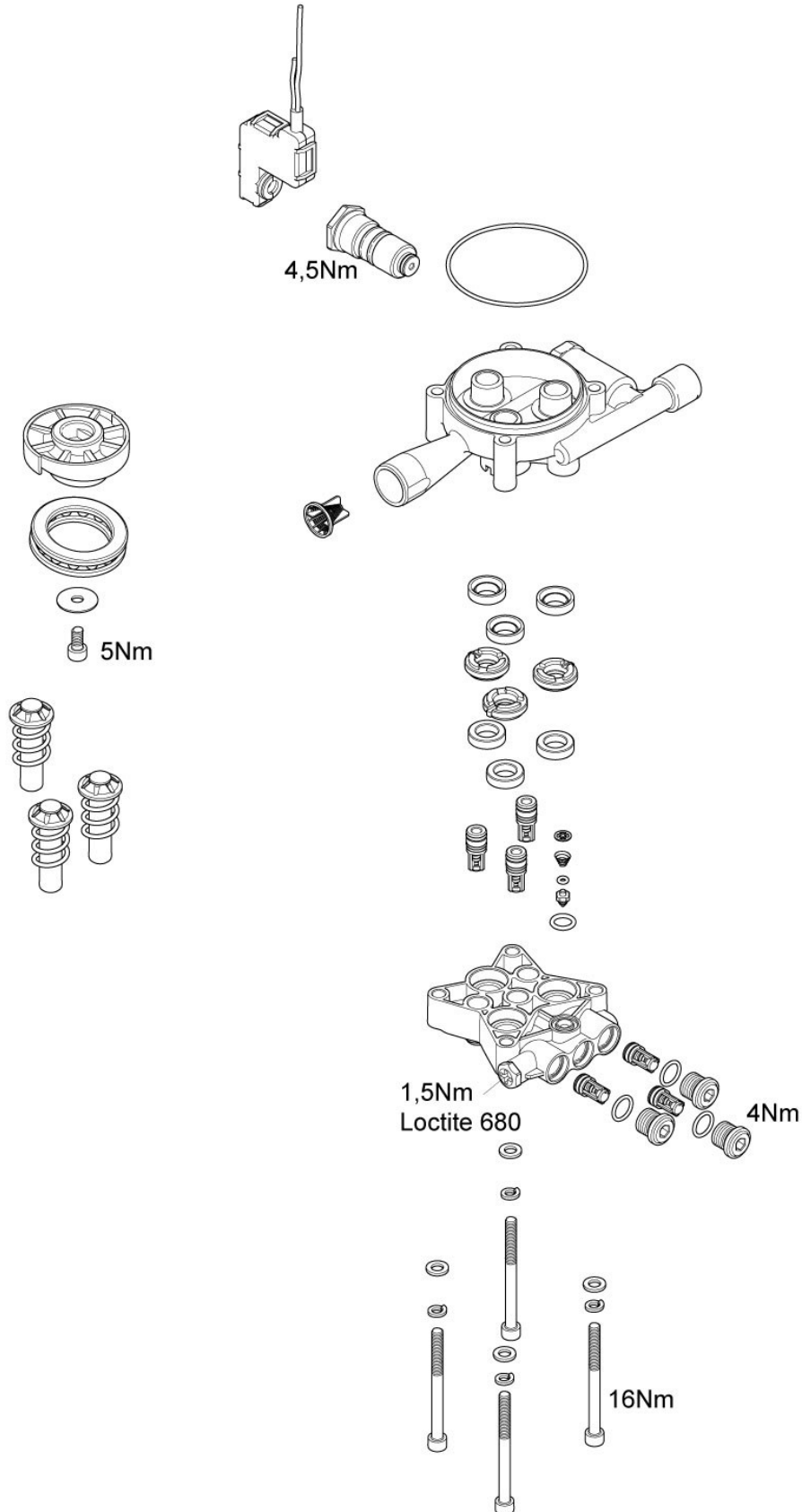


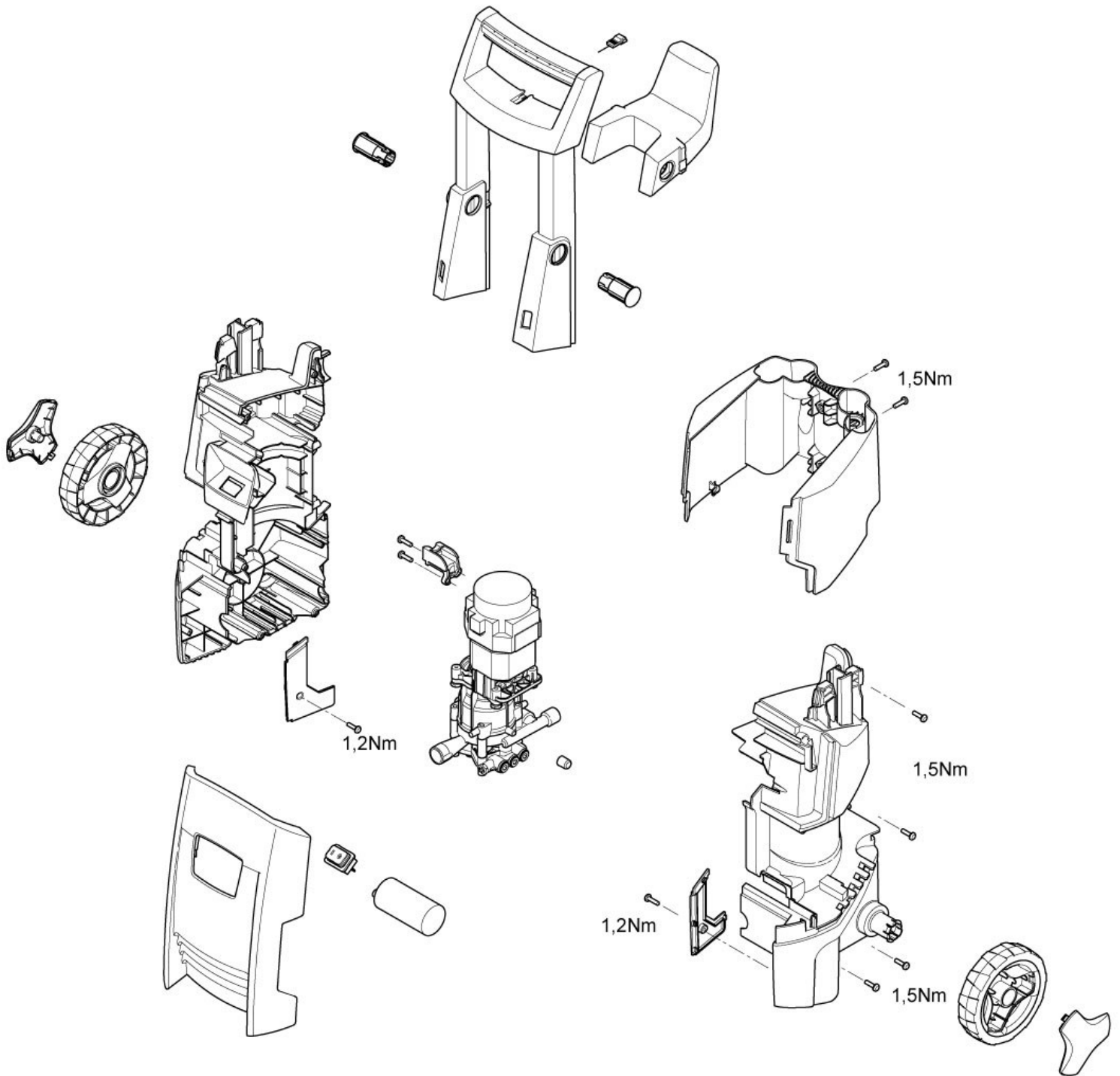
Fig. 2



Pump torque.



Cabinet torque.



Recommended oil types:

The pump is filled with 80 ml LHM 32 from the production.

In case of service where the oil must be changed Nilfisk-Advance recommends to use 80 ml Bartran HV 46.

Alternative oil types that are allowed:

BP, Bartram HV 46

Shell, Tellus T 46

Exxon, Statoil Univis N 46

Mobil Oil Mobil DTE 25

Recommended lubrication:

White grease for o-rings, sealings etc.:

Silicone grease, DOW CORNING(R) 55 O-RING LUBRICANT

Recommended glue:

Loctite 680, alternatively Loctite 270 or 271

Special tools:

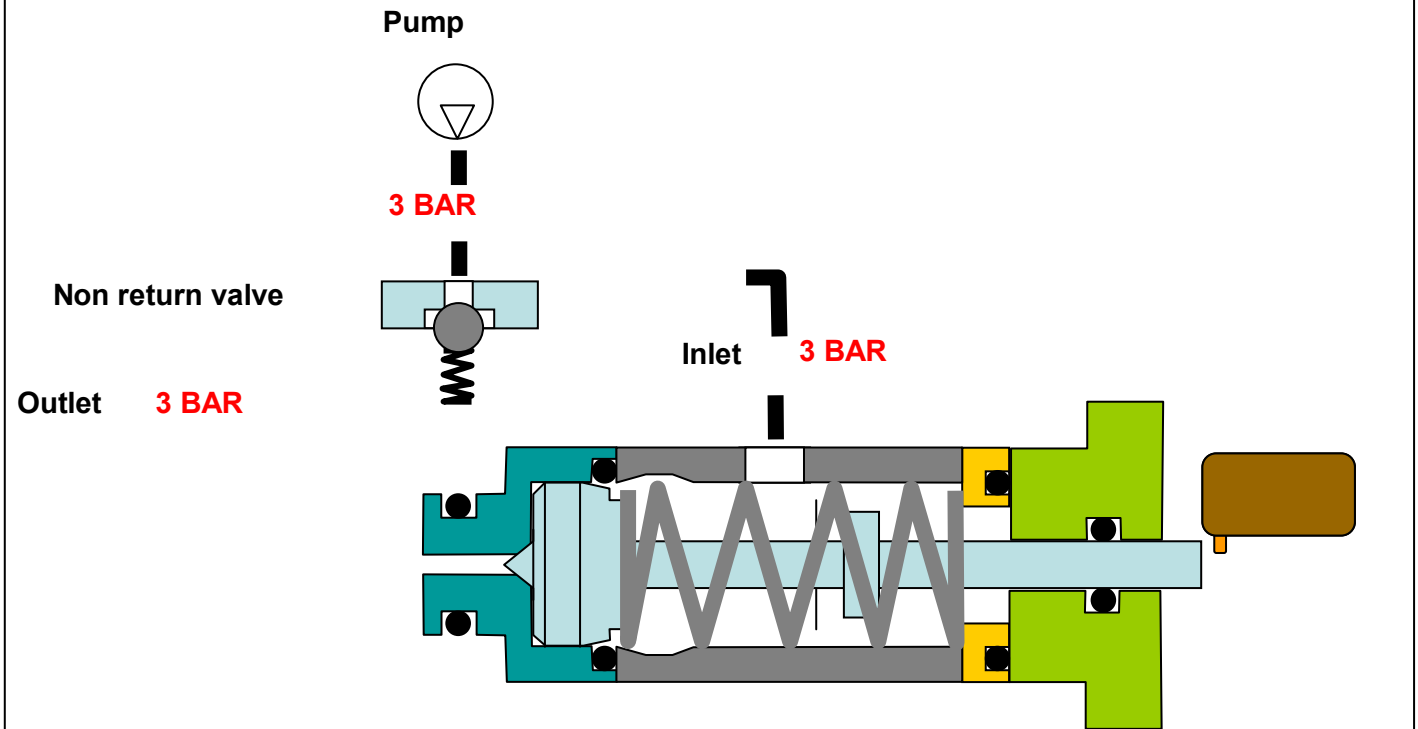
Puller for valve seat M4—item number 31000189 (Page 9).

Puller for valve seat (pressure and suction valve) - item number 1220103 (Page 10)

3.0 Start stop System guide

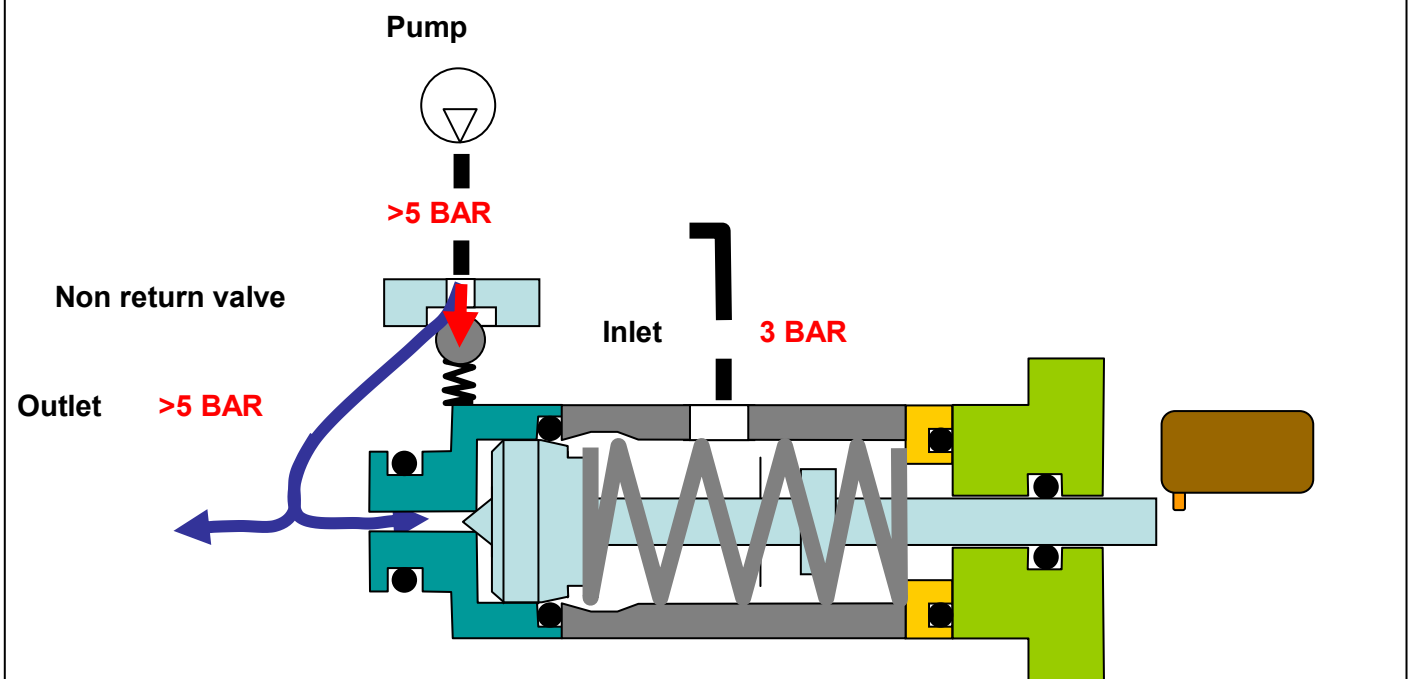
3.1 No pressure in system

No pressure in system - except inlet pressure 3 bar. Machine switch off.

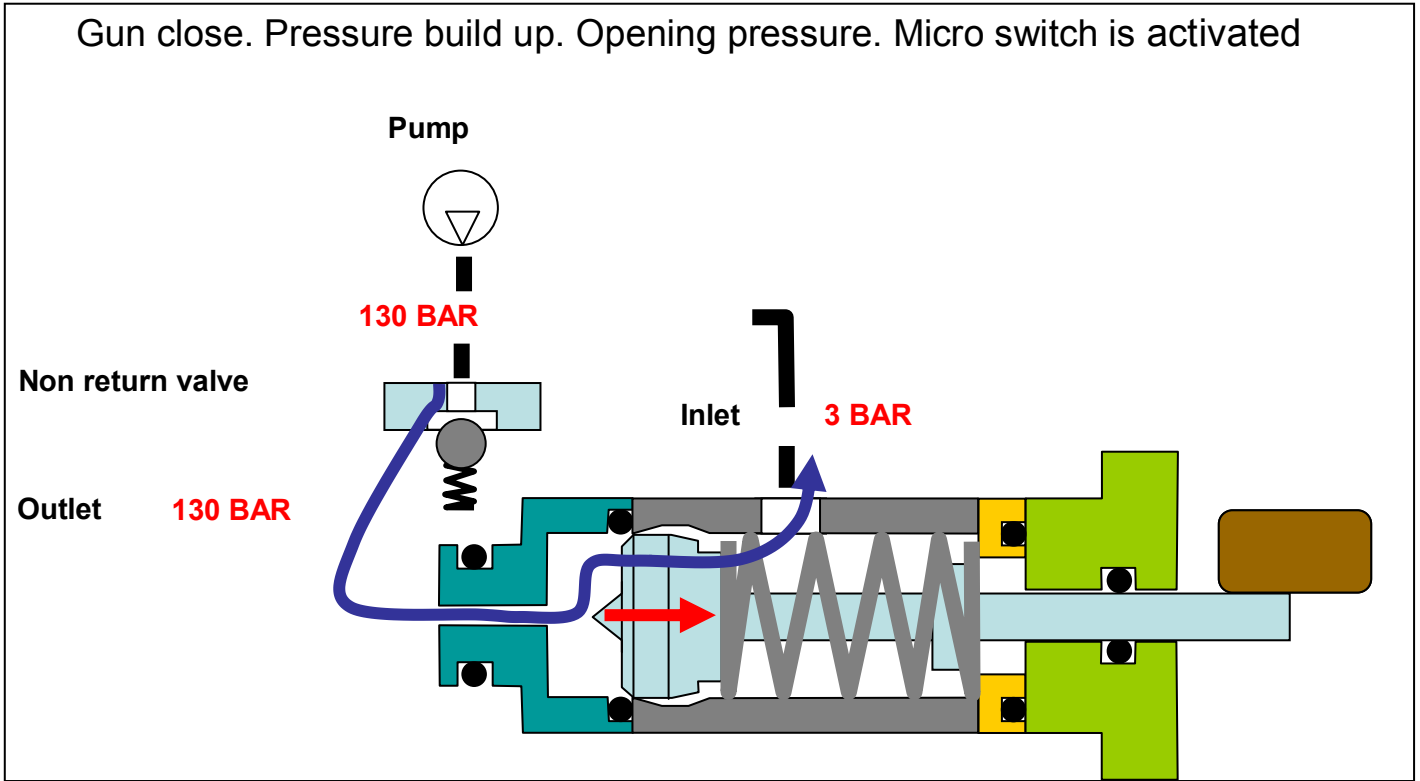


3.2 Start up-pressure build up

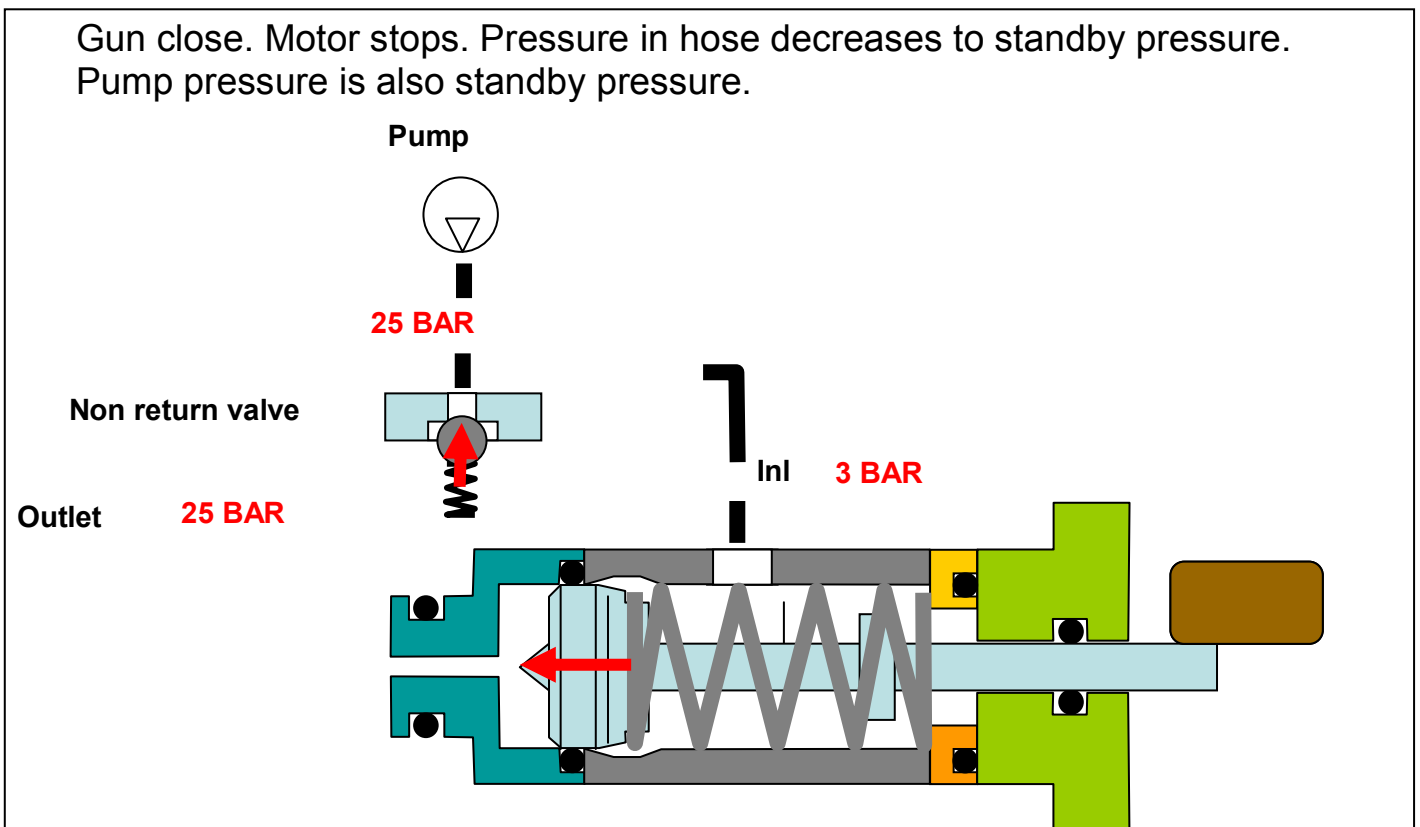
Machine switch on / Start up – Pressure build up



3.3 Pressure build up-opening pressure / close gun

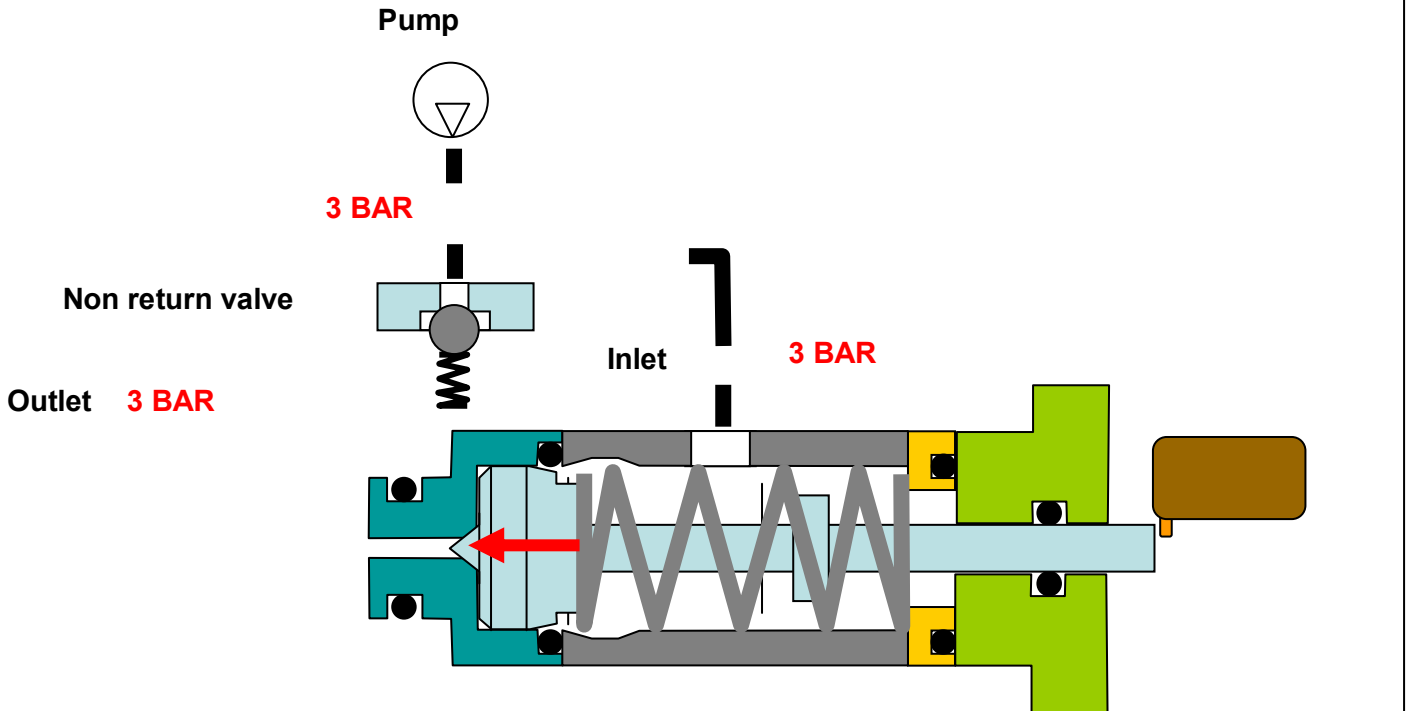


3.4 Motor stop – Standby pressure



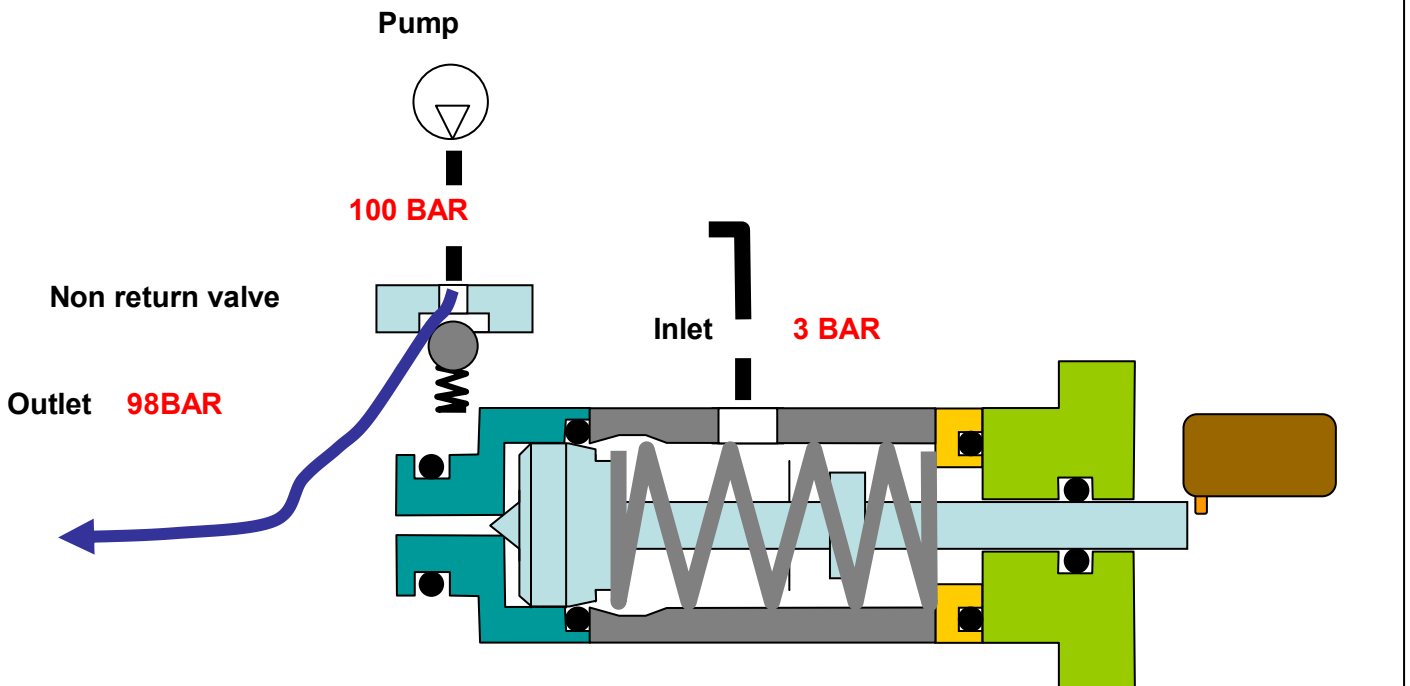
3.5 Gun is activated

Gun is open - Control piston is closed. Micro switch is deactivated. Motor starts.



3.6 Machine run

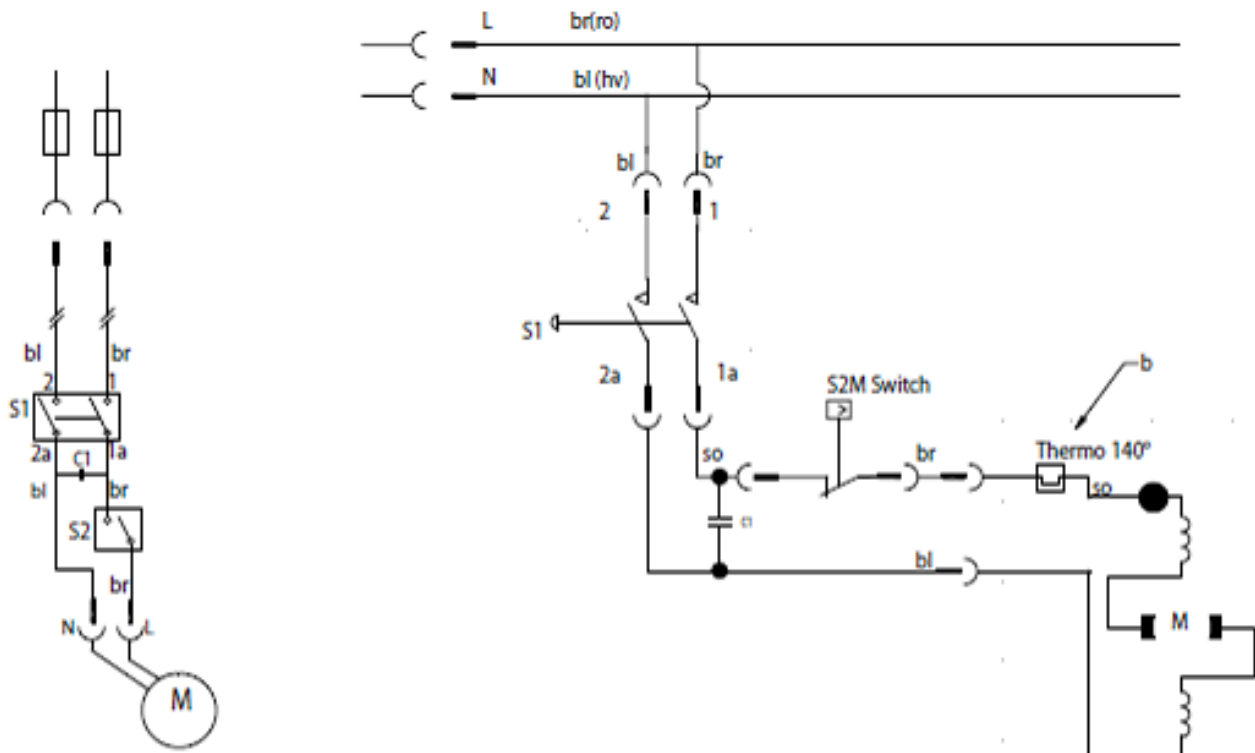
Machine runs (normal working pressure). Gun is open.



Wiring Diagram C 125.4 - C 130.2

Ledningsdiagram - Wiring diagram - Schaltbild -
Schema de Circuits 接线图

Kredsløbsdiagram - Circuit diagram - Schaltplan - Schema de Circuit
electrique 线路图

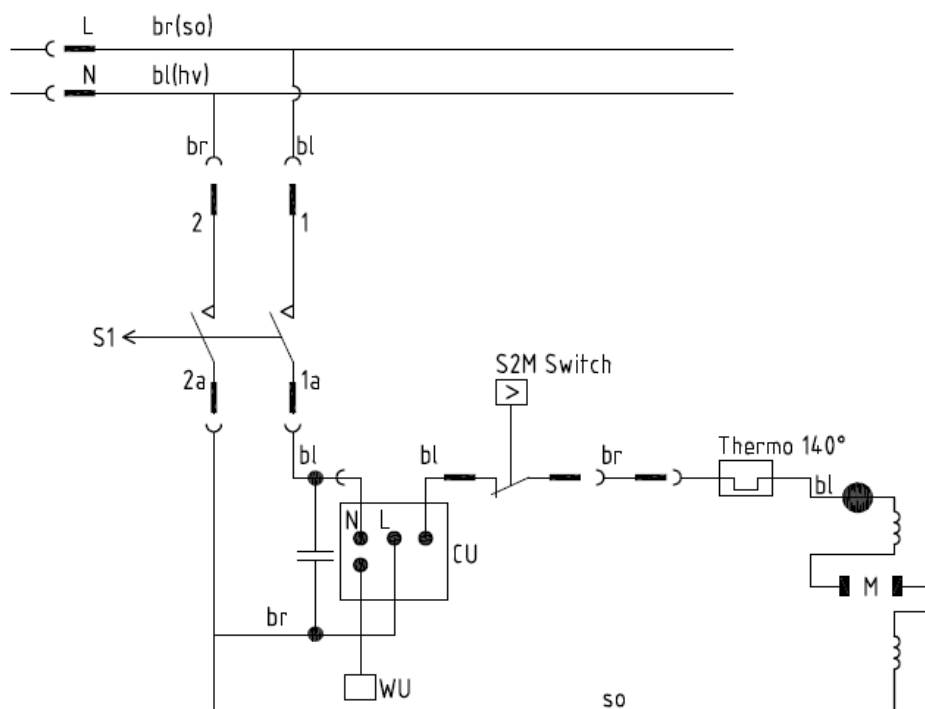
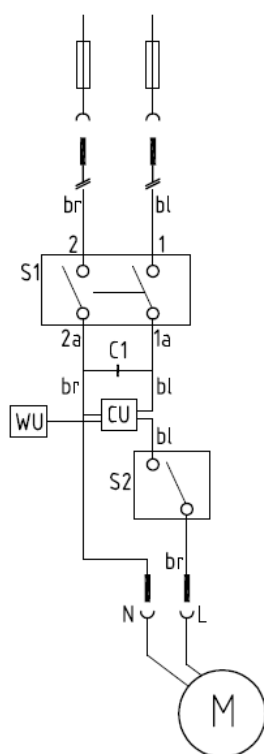


	DANSK	ENGLISH	DEUTSCH	FRANCAIS
br	Brun	Brown	Braun	Brun
bl	Blå	Blue	Blau	Bleu
so	Sort	Black	Schwarz	Noir
gu	Gul	Yellow	Gelb	Jaune
hv	hvid	White	Weiss	Blone
C1	Kondensator	Capacitor	Kondensator	Condensateur
S1	Afbryder	Switch	Schalter	Disjonteur
S2	Enpolet afbryder/ microswitch	Single-pole switch/ microswitch	Einpolig Schalter/ Microschalter	Disjonteur monopolaire/ Microswitch
M	Motor	Motor	Motor	Moteur

Wiring Diagram C-PG 130.2 X-TRA

Ledningsdiagram - Wiring diagram
- Schaltbild - Schema de Circuits

Kredsløbsdiagram - Circuit diagram - Schaltplan - Schema de Circuit électrique



	DANSK	ENGLISH	DEUTSCH	FRANCAIS
br	Brun	Brown	Braun	Brun
bl	Blå	Blue	Blau	Bleu
so	Sort	Black	Schwarz	Noir
gu	Gul	Yellow	Gelb	Jaune
hv	Hvid	White	Weiss	Blonde
C1	Kondensator	Capacitor	Kondensator	Condensateur
S1	Afbryder	Switch	Schalter	Disjonteur
S2	Enpolet afbryder/ Mikroschitch	Single-pole switch/ micro switch	Einpolig Schalter/ Micro schalter	Disjonteur monopolaire/ Micro schwitch
CU	Kontrol enhed	Control unit	Steuergerät	Unite de contrôle
M	Motor	Motor	Motor	Moteur
WU	Trådløs enhed	Wireless unit	Drahtlose Einheit	Unite sans fil